

Nashoba Learning Group

Help for those with Autism and hope for their families.

Your Gifts. Your Impact. Your Support.

19 new students joined NLG. Increasing enrollment to **130**



NLG's Vocational Department created **13** new work sites. NLG now partners with **47**

companies for volunteer, internships, and paid work.



31 staff members have been part of NLG for 10 years or more.



We opened a new Recreational Space at our Billerica site to be enjoyed by students and adult program members.



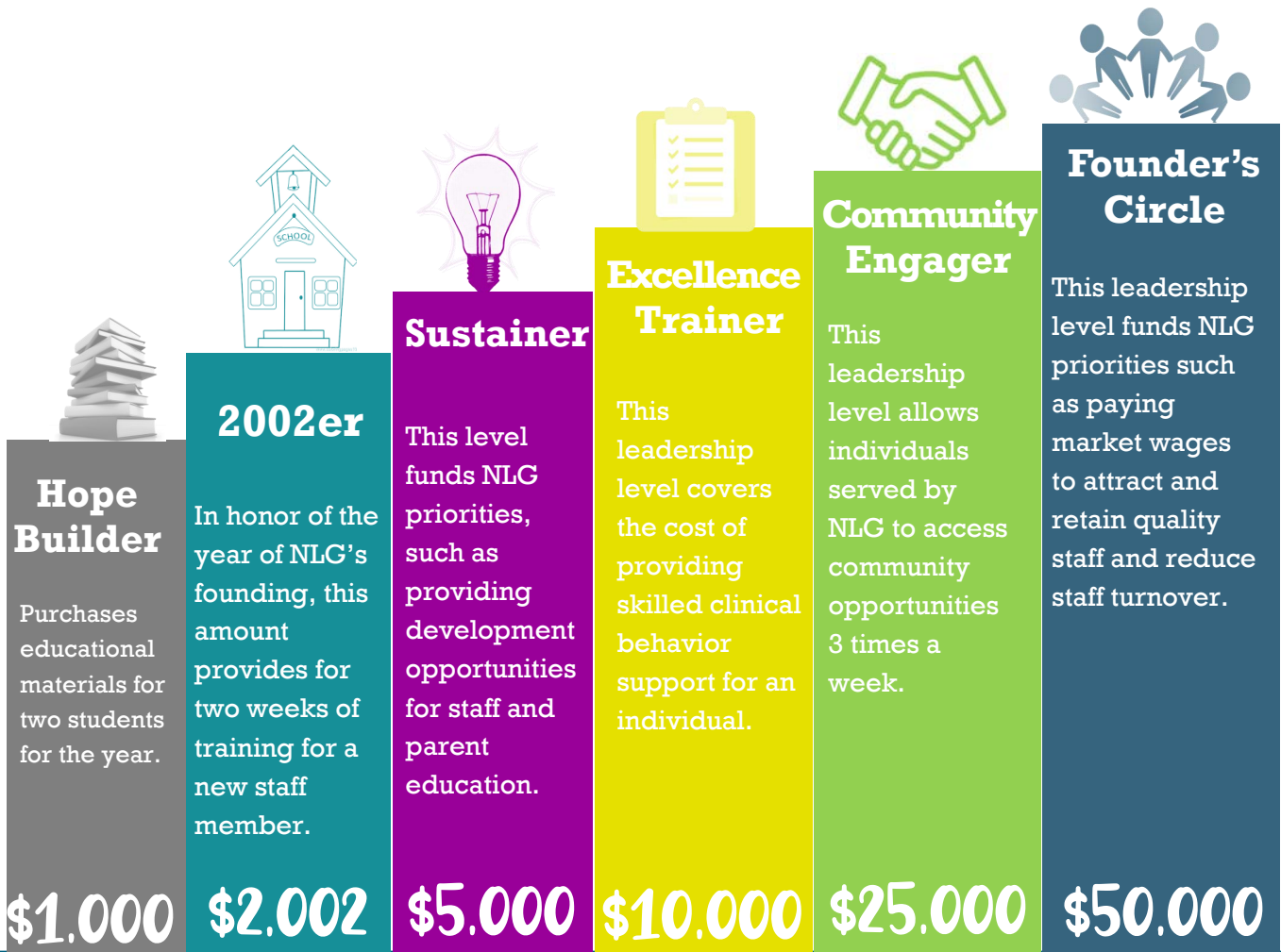
73 staff members were hired and trained.



Announcing NLG's new Giving Levels!

LEADERSHIP GIVING makes an enormous difference to every student and adult at NLG. Your support goes toward funding NLG's most pressing needs and promising opportunities.

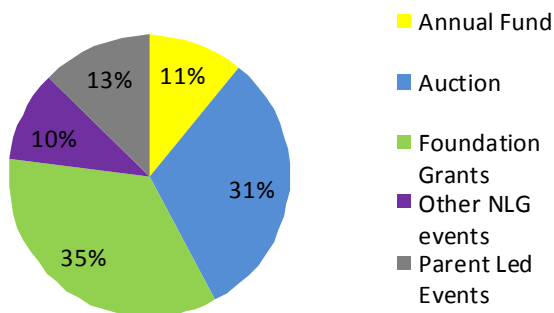
WHEN YOU JOIN THE LEADERSHIP CIRCLE, you become an active part of NLG's pursuit of excellence by providing resources that create opportunities for students, and development for staff members. You become a critical partner in sustaining NLG's excellence. All your gifts over the year count towards your level. Find the Leadership Giving level that matches your families needs.



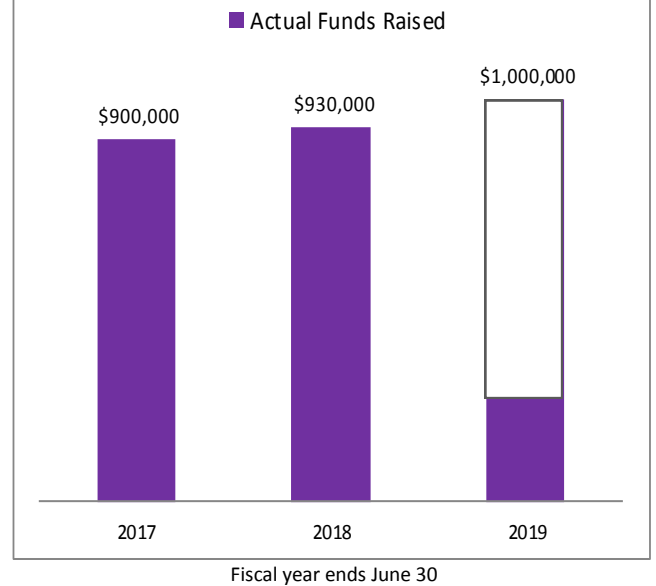
All gifts during the fiscal year are included to determine the Giving Level.

A Look at NLG's Numbers

2018 Fundraising by Source



Fundraising Target to Fully Fund NLG's Programs



Help us achieve our 2019 Target!

How One Family has Chosen to Support NLG

"The Comedy Night to Benefit Nashoba Learning Group and Autism Speaks was born out of a conversation with my good friend, Don Gavin, one of the top comedians in the country. Comedians are legendary for their generosity, and Don suggested he put a show together to benefit the autism cause. We had the first show in 2008 and it has become an annual tradition.

We have raised more than \$100,000 over the years. Julie and I are fortunate in that we have a core group of family, friends and colleagues who have been extremely loyal in their attendance and support year after year. That is also a testament to the caliber of comedians that Don attracts. Our show features an all-star cast that are headliners around the world.

We donate all the net proceeds to NLG and Autism Speaks. One of the other positives is that we invite NLG staff as our guests, as a small token of our appreciation for the phenomenal work they do every day. Plus, we all need a few laughs now and then!"

Paul Halloran, NLG Parent



WAYS TO SUPPORT NLG

- ◇ Contribute to NLG's **Annual Fund** by June 30th
- ◇ Sponsor the **Full Court Charity Challenge** held on March 16th
- ◇ Create a team and run in **NLG's 5K Shuffle and Fun Run** on April 7th
- ◇ Support NLG's Boston Marathon Team on CrowdRise.com
- ◇ Bring family and friends to NLG's **Spring Carnival** on May 18th
- ◇ Train now for NLG's **Bike-A-Thon** on July 20th
- ◇ Create your own event, facebook campaign or crowdrise page to raise awareness and funding for NLG!

Nashoba Learning Group, Inc.

10 Oak Park Drive

Bedford MA 01730

NONPROFIT ORG
U.S. Postage
PAID
Burlington, MA
Permit NO. 9

Phone: 781-275-2500

info@nashobalearninggroup.org

www.nashobalearninggroup.org

ABOUT NASHOBA LEARNING GROUP

Nashoba Learning Group is a nonprofit organization serving individuals with Autism Spectrum Disorder. Founded in 2002, we provide high quality, research backed programming for 170 children and adults with Autism, Intellectual Disability, and intensive clinical needs.

NLG's mission is to enable these individuals to function with the greatest possible productivity and independence in the community, home, and workplace throughout their lives.

